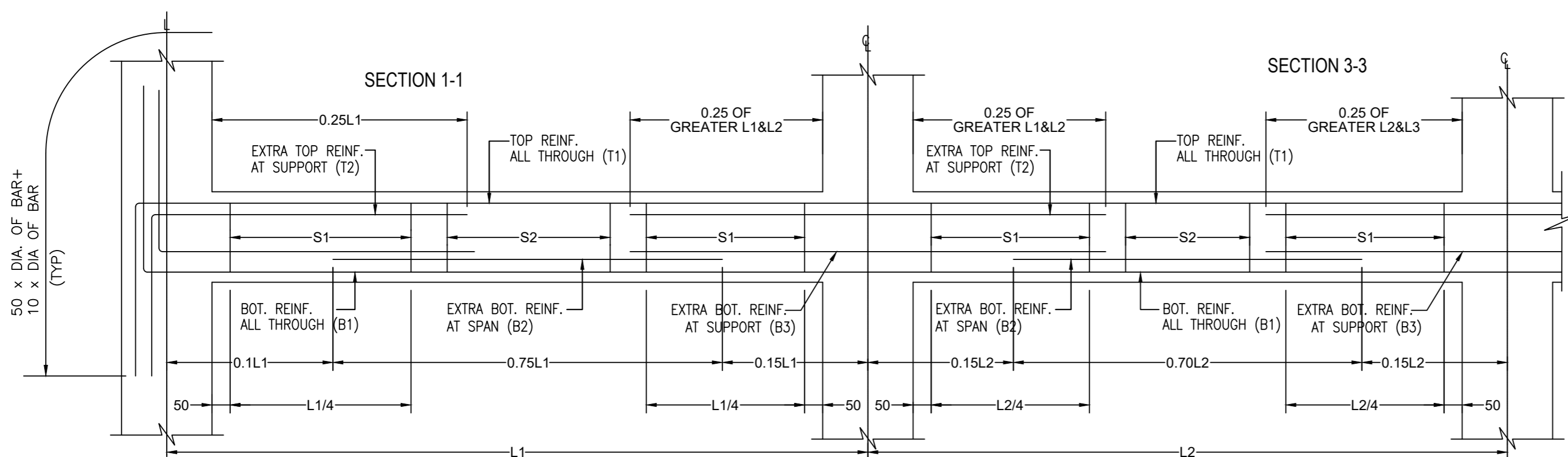


STRUCTURAL ARRANGEMENT OF PLINTH BEAMS  
SCALE - 1:100

BEAM GROUP	BEAM NO.	SIZE		BOTTOM REINFORCEMENT			TOP REINFORCEMENT			SHEAR STIRRUPS		
		B	D	LEFT	MID SPAN	RIGHT	LEFT	MID SPAN	RIGHT	LEFT	MID SPAN	RIGHT
PB-1	B1	250	400	3-Ø16	3-Ø16	3-Ø16 + 2-Ø12	3-Ø16	3-Ø16	3-Ø16 + 2-Ø16	Ø8@75 C/C	Ø8@150 C/C	Ø8@75 C/C
	B2	250	400	3-Ø16 + 2-Ø12	3-Ø16	3-Ø16 + 2-Ø12	3-Ø16	3-Ø16	3-Ø16 + 2-Ø16	Ø8@75 C/C	Ø8@100 C/C	Ø8@75 C/C
	B3	250	400	3-Ø16 + 2-Ø12	3-Ø16	3-Ø16 + 2-Ø12	3-Ø16	3-Ø16	3-Ø16 + 2-Ø16	Ø8@75 C/C	Ø8@150 C/C	Ø8@75 C/C
	B4	250	400	3-Ø16 + 2-Ø12	3-Ø16	3-Ø16 + 2-Ø12	3-Ø16	3-Ø16	3-Ø16 + 2-Ø16	Ø8@75 C/C	Ø8@150 C/C	Ø8@75 C/C
PB-2	B5	250	400	3-Ø16	3-Ø16	3-Ø16	3-Ø16	3-Ø16	3-Ø16 + 2-Ø12	Ø8@150 C/C	Ø8@150 C/C	Ø8@150 C/C
PB-3	B6	250	400	3-Ø16	3-Ø16	3-Ø16	3-Ø16	3-Ø16	3-Ø16 + 2-Ø12	Ø8@75 C/C	Ø8@150 C/C	Ø8@75 C/C
	B7	250	400	3-Ø16	3-Ø16	3-Ø16	3-Ø16	3-Ø16	3-Ø16 + 2-Ø12	Ø8@75 C/C	Ø8@150 C/C	Ø8@75 C/C
PB-4	B8	250	400	3-Ø16	3-Ø16	3-Ø16	3-Ø16	3-Ø16	3-Ø16 + 2-Ø12	Ø8@100 C/C	Ø8@150 C/C	Ø8@150 C/C
	B9	250	400	3-Ø16	3-Ø16	3-Ø16	3-Ø16	3-Ø16	3-Ø16 + 2-Ø12	Ø8@125 C/C	Ø8@125 C/C	Ø8@150 C/C
PB-5	B10	250	400	3-Ø16	3-Ø16	3-Ø16	3-Ø16	3-Ø16	3-Ø16 + 2-Ø12	Ø8@75 C/C	Ø8@150 C/C	Ø8@75 C/C
	B11	250	400	3-Ø16	3-Ø16	3-Ø16	3-Ø16	3-Ø16	3-Ø16 + 2-Ø12	Ø8@150 C/C	Ø8@150 C/C	Ø8@150 C/C
PB-6	B12	250	400	3-Ø16	3-Ø16	3-Ø16	3-Ø16	3-Ø16	3-Ø16	Ø8@75 C/C	Ø8@150 C/C	Ø8@75 C/C
	B13	250	400	3-Ø16	3-Ø16	3-Ø16	3-Ø16	3-Ø16	3-Ø16	Ø8@75 C/C	Ø8@150 C/C	Ø8@75 C/C
PB-7	B14	250	400	3-Ø16	3-Ø16	3-Ø16	3-Ø16	3-Ø16	3-Ø16	Ø8@150 C/C	Ø8@150 C/C	Ø8@150 C/C
	B15	250	400	3-Ø16 + 2-Ø12	3-Ø16	3-Ø16	3-Ø16	3-Ø16	3-Ø16 + 2-Ø12	Ø10@75 C/C	Ø10@150 C/C	Ø10@75 C/C
PB-8	B16	250	400	3-Ø16	3-Ø16	3-Ø16	3-Ø16	3-Ø16	3-Ø16 + 2-Ø12	Ø8@75 C/C	Ø8@150 C/C	Ø8@75 C/C
	B17	250	400	3-Ø16	3-Ø16	3-Ø16	3-Ø16	3-Ø16	3-Ø16 + 2-Ø12	Ø8@150 C/C	Ø8@150 C/C	Ø8@150 C/C
	B18	250	400	3-Ø16	3-Ø16	3-Ø16	3-Ø16	3-Ø16	3-Ø16	Ø8@150 C/C	Ø8@150 C/C	Ø8@150 C/C
PB-9	B19	250	400	3-Ø16	3-Ø16	3-Ø16 + 2-Ø12	3-Ø16	3-Ø16	3-Ø16 + 2-Ø12	Ø8@75 C/C	Ø8@75 C/C	Ø8@100 C/C
	B20	250	400	3-Ø16	3-Ø16	3-Ø16	3-Ø16	3-Ø16	3-Ø16	Ø8@150 C/C	Ø8@150 C/C	Ø8@150 C/C
PB-10	B21	250	400	3-Ø16	3-Ø16	3-Ø16	3-Ø16	3-Ø16	3-Ø16	Ø8@75 C/C	Ø8@150 C/C	Ø8@75 C/C
	B22	250	400	3-Ø16	3-Ø16	3-Ø16	3-Ø16	3-Ø16	3-Ø16	Ø8@150 C/C	Ø8@150 C/C	Ø8@150 C/C
PB-11	B23	250	400	3-Ø16	3-Ø16	3-Ø16 + 2-Ø12	3-Ø16	3-Ø16	3-Ø16 + 2-Ø12	Ø10@75 C/C	Ø10@75 C/C	Ø10@75 C/C
	B24	250	400	3-Ø16 + 2-Ø12	3-Ø16	3-Ø16	3-Ø16	3-Ø16	3-Ø16 + 2-Ø12	Ø8@75 C/C	Ø8@125 C/C	Ø8@75 C/C
PB-12	B25	250	400	3-Ø16 + 2-Ø12	3-Ø16	3-Ø16 + 2-Ø12	3-Ø16	3-Ø16	3-Ø16 + 2-Ø12	Ø8@75 C/C	Ø8@150 C/C	Ø8@75 C/C
	B26	250	400	3-Ø16 + 2-Ø12	3-Ø16	3-Ø16	3-Ø16	3-Ø16	3-Ø16 + 2-Ø12	Ø8@150 C/C	Ø8@150 C/C	Ø8@150 C/C
PB-13	B27	250	400	3-Ø16	3-Ø16	3-Ø16 + 2-Ø12	3-Ø16	3-Ø16	3-Ø16 + 2-Ø12	Ø8@150 C/C	Ø8@150 C/C	Ø8@150 C/C
	B28	250	400	3-Ø16 + 2-Ø12	3-Ø16	3-Ø16 + 2-Ø12	3-Ø16	3-Ø16	3-Ø16 + 2-Ø12	Ø8@75 C/C	Ø8@125 C/C	Ø8@75 C/C
PB-14	B29	250	400	3-Ø16 + 2-Ø12	3-Ø16	3-Ø16 + 2-Ø12	3-Ø16	3-Ø16	3-Ø16 + 2-Ø12	Ø8@75 C/C	Ø8@150 C/C	Ø8@75 C/C
	B30	250	400	3-Ø16 + 2-Ø12	3-Ø16	3-Ø16	3-Ø16	3-Ø16	3-Ø16 + 2-Ø12	Ø8@75 C/C	Ø8@150 C/C	Ø8@75 C/C
PB-15	B31	250	400	3-Ø16	3-Ø16	3-Ø16 + 2-Ø12	3-Ø16	3-Ø16	3-Ø16 + 2-Ø12	Ø8@150 C/C	Ø8@75 C/C	Ø8@75 C/C
PB-16	B32	250	400	3-Ø16	3-Ø16	3-Ø16 + 2-Ø12	3-Ø16	3-Ø16	3-Ø16 + 2-Ø12	Ø8@150 C/C	Ø8@150 C/C	Ø8@150 C/C
PB-17	B33	250	400	3-Ø16 + 2-Ø12	3-Ø16	3-Ø16 + 2-Ø12	3-Ø16	3-Ø16	3-Ø16 + 2-Ø12	Ø8@75 C/C	Ø8@125 C/C	Ø8@75 C/C

BEAM GROUP	BEAM NO.	SIZE		BOTTOM REINFORCEMENT			TOP REINFORCEMENT			SHEAR STIRRUPS			
		B	D	LEFT	MID SPAN	RIGHT	LEFT	MID SPAN	RIGHT	LEFT	MID SPAN	RIGHT	
PB-19	B34	250	400	3-Ø16 + 3-Ø12	3-Ø16	3-Ø16 + 3-Ø12	3-Ø16 + 3-Ø12	3-Ø16	3-Ø16	3-Ø16 + 3-Ø12	Ø8@75 C/C	Ø8@150 C/C	Ø8@75 C/C
	B35	250	400	3-Ø16 + 3-Ø12	3-Ø16	3-Ø16	3-Ø16 + 3-Ø12	3-Ø16	3-Ø16	3-Ø16	Ø8@150 C/C	Ø8@150 C/C	Ø8@150 C/C
PB-20	B36	250	400	3-Ø16	3-Ø16	3-Ø16 + 2-Ø16	2-Ø25	2-Ø25	2-Ø25 + 2-Ø16	Ø8@150 C/C	Ø8@150 C/C	Ø8@150 C/C	
	B37	250	400	3-Ø16 + 3-Ø16	3-Ø16	3-Ø16 + 3-Ø16	2-Ø25 + 2-Ø16	2-Ø25	2-Ø25 + 2-Ø16	Ø8@75 C/C	Ø8@100 C/C	Ø8@75 C/C	
PB-21	B38	250	400	3-Ø16	3-Ø16	3-Ø16 + 2-Ø12	3-Ø16	3-Ø16	3-Ø16 + 2-Ø12	Ø8@150 C/C	Ø8@150 C/C	Ø8@150 C/C	
	B39	250	400	2-Ø25 + 2-Ø16	2-Ø25	2-Ø25 + 2-Ø16	2-Ø25 + 2-Ø20	2-Ø25	2-Ø25 + 2-Ø20	Ø10@75 C/C	Ø10@150 C/C	Ø10@75 C/C	
PB-22	B40	250	400	2-Ø25 + 2-Ø16	2-Ø25	2-Ø25 + 2-Ø16	2-Ø25 + 2-Ø20	2-Ø25	2-Ø25 + 2-Ø20	Ø10@75 C/C	Ø10@150 C/C	Ø10@75 C/C	
	B41	250	400	3-Ø16 + 2-Ø12	3-Ø16	3-Ø16 + 2-Ø12	3-Ø16 + 2-Ø12	3-Ø16	3-Ø16 + 2-Ø12	Ø8@75 C/C	Ø8@150 C/C	Ø8@75 C/C	
PB-23	B42	250	400	3-Ø16	3-Ø16	3-Ø16	3-Ø16 + 3-Ø16	3-Ø16	3-Ø16 + 3-Ø16	Ø8@75 C/C	Ø8@125 C/C	Ø8@75 C/C	
	B43	250	400	3-Ø16 + 2-Ø12	3-Ø16	3-Ø16 + 2-Ø12	3-Ø16 + 3-Ø12	3-Ø16	3-Ø16 + 2-Ø12	Ø8@75 C/C	Ø8@150 C/C	Ø8@75 C/C	
PB-24	B44	250	400	3-Ø16 + 2-Ø12	3-Ø16	3-Ø16	3-Ø16 + 2-Ø12	3-Ø16	3-Ø16	Ø8@150 C/C	Ø8@150 C/C	Ø8@150 C/C	
	B45	250	400	3-Ø16	3-Ø16	3-Ø16	3-Ø16	3-Ø16	3-Ø16	Ø8@75 C/C	Ø8@150 C/C	Ø8@75 C/C	
PB-25	B46	250	400	3-Ø16	3-Ø16	3-Ø16	3-Ø16	3-Ø16	3-Ø16				
	B47	250	400	3-Ø16	3-Ø16	3-Ø16	3-Ø16	3-Ø16	3-Ø16	Ø8@150 C/C	Ø8@150 C/C	Ø8@150 C/C	
PB-26	B48	250	400	3-Ø16	3-Ø16	3-Ø16	3-Ø16	3-Ø16	3-Ø16	Ø8@150 C/C	Ø8@150 C/C	Ø8@150 C/C	
	B49	250	400	3-Ø16	3-Ø16	3-Ø16 + 2-Ø12	3-Ø16	3-Ø16	3-Ø16 + 2-Ø12	Ø8@75 C/C	Ø8@150 C/C	Ø8@75 C/C	
PB-27	B50	250	400	3-Ø16 + 2-Ø12	3-Ø16	3-Ø16 + 2-Ø12	3-Ø16	3-Ø16	3-Ø16 + 2-Ø12	Ø8@75 C/C	Ø8@150 C/C	Ø8@75 C/C	
	B51	250	400	3-Ø16 + 2-Ø12	3-Ø16	3-Ø16 + 2-Ø12	3-Ø16	3-Ø16	3-Ø16 + 2-Ø12	Ø8@75 C/C	Ø8@150 C/C	Ø8@75 C/C	



PROJECT TITLE:-  
G+4 STORIED RESIDENTIAL CUM COMMERCIAL  
BUILDING OF OASIS VENTURES REPRESENTED BY ITS  
PARTNER SRI KASHINATH AGARWAL

DRAWING TITLE:-PLINTH BEAM DETAILS

DECLARATION

We do hereby certify that the foundation and superstructure of the building proposed for construction on Plot no. (R.S)550,(L.R)89 At Sashtri Nagar, Siliguri Ward No-41, PS- Bhaktinagar, Dist.- Jalpaiguri under the jurisdiction of Siliguri Municipal Corporation/ Notified Area Authority/ Industrial Township Authority have been personally inspected and so designed by us will make such foundation and super structure safe in all respect including the consideration of bearing capacity and settlement of soil and other condition if any conforming to all stipulations of all relevant IS CODE of practice.

SIGN OF STRUCTURAL ENGINEER

CROZENTH CIVIL & STRUCTURAL  
ENGINEERING CONSULTANTS

ADDRESS: 10, HAREN MUKHERJEE ROAD, SILIGURI  
CONTACT NUMBER: +91 7908820322/ 9830577330  
STRUCTURAL DRAWING IS PREPARED BY CROZENTH.  
NO PART OF THE DRAWING SHOULD BE DUPLICATED  
WITHOUT THE CONSENT OF THE FIRM.

DESIGNED BY: S. BASAK	REV. NO.	DATE
DEALT BY: N. RAI		
CHECKED BY: R. CHAKRABORTI		
SCALE 1:100	SHEET NO. STR/02	DATE:08/12/2022

